

84 Northfield Avenue, London, W13 9RR

020 8840 5151



Freehold / House - Terraced

Camborne Avenue

£850,000

A good size three bedroom Edwardian house between Northfield Avenue and Lammas Park.



Freehold / House - Terraced

Camborne Avenue, W13 9QZ

£850,000

This bay fronted Edwardian house has been in the same family ownership for many years and would now benefit from modernisation and updating, offering fantastic scope for extensions both on the ground floor and loft space (subject to the usual consents).

On the South side of Camborne Avenue, moments from the local shopping parades, cafes and Piccadilly line station on Northfield Avenue and close to excellent local schools including Little Ealing and Mount Carmel Primary and Ealing Fields Secondary schools.



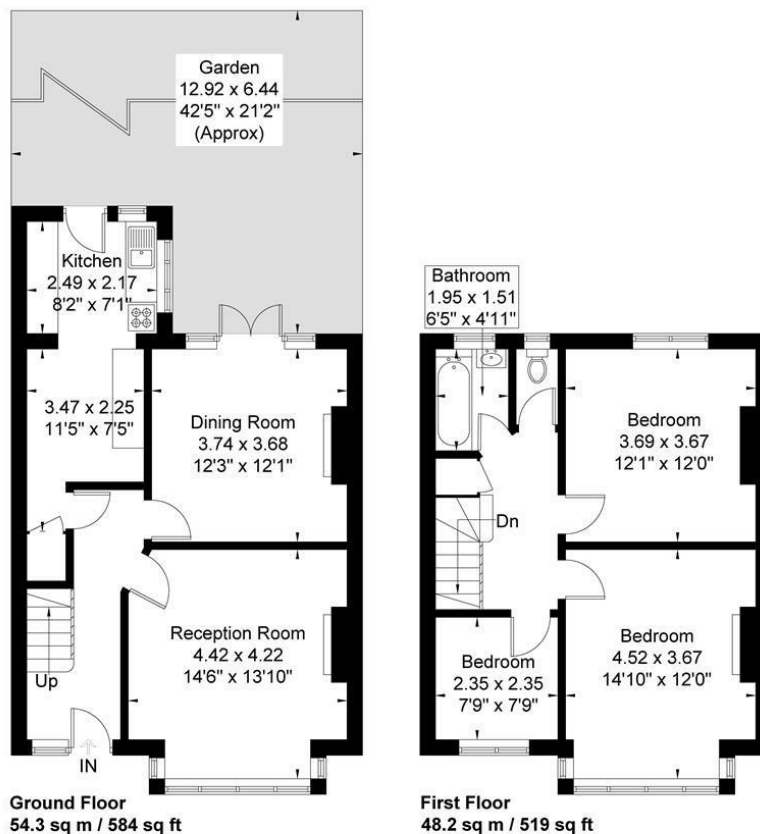
84 Northfield Avenue, London, W13 9RR

020 8840 5151



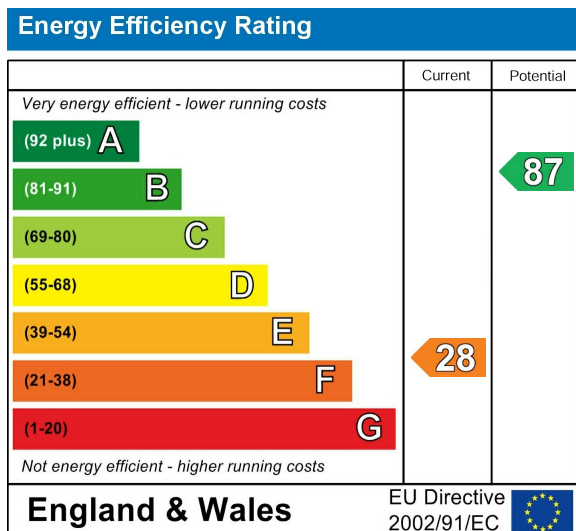
Camborne Avenue

Approximate Gross Internal Area = 102.5 sq m / 1103 sq ft



Although every attempt has been made to ensure accuracy, all measurements are approximate.
The floorplan is for illustrative purposes only and not to scale.
© www.perspective.co.uk

Energy Performance Graph



Call us on

020 8840 5151

northfieldsales@sintonandrews.co.uk

www.sintonandrews.co.uk

Agents Note: Whilst every care has been taken to prepare these particulars, they are for guidance purposes only. All measurements are approximate and are for general guidance purposes only and whilst every care has been taken to ensure their accuracy, they should not be relied upon and potential buyers are advised to recheck the measurements.